

# ConstructConnect Takeoff

## v. 21.10.0.0

### Release Date: November 16, 2021

V.21.10.0.0 is a scheduled upgrade to ConstructConnect Takeoff that includes some workflow changes and many bug fixes.

#### Contents

Changes .....	2
Remove resizing and reorientating Revision Sets from the Cloud .....	2
New Workflow for Editing the Plan Organizer .....	3
Updated Delete Confirmations within Plan Set Editor and Plan Organizer .....	3
App Remains Open When Performing Calculations .....	5
Updated Tooltips to Improve User Experience .....	5
Fixes .....	6
Known Issues .....	7

## Changes

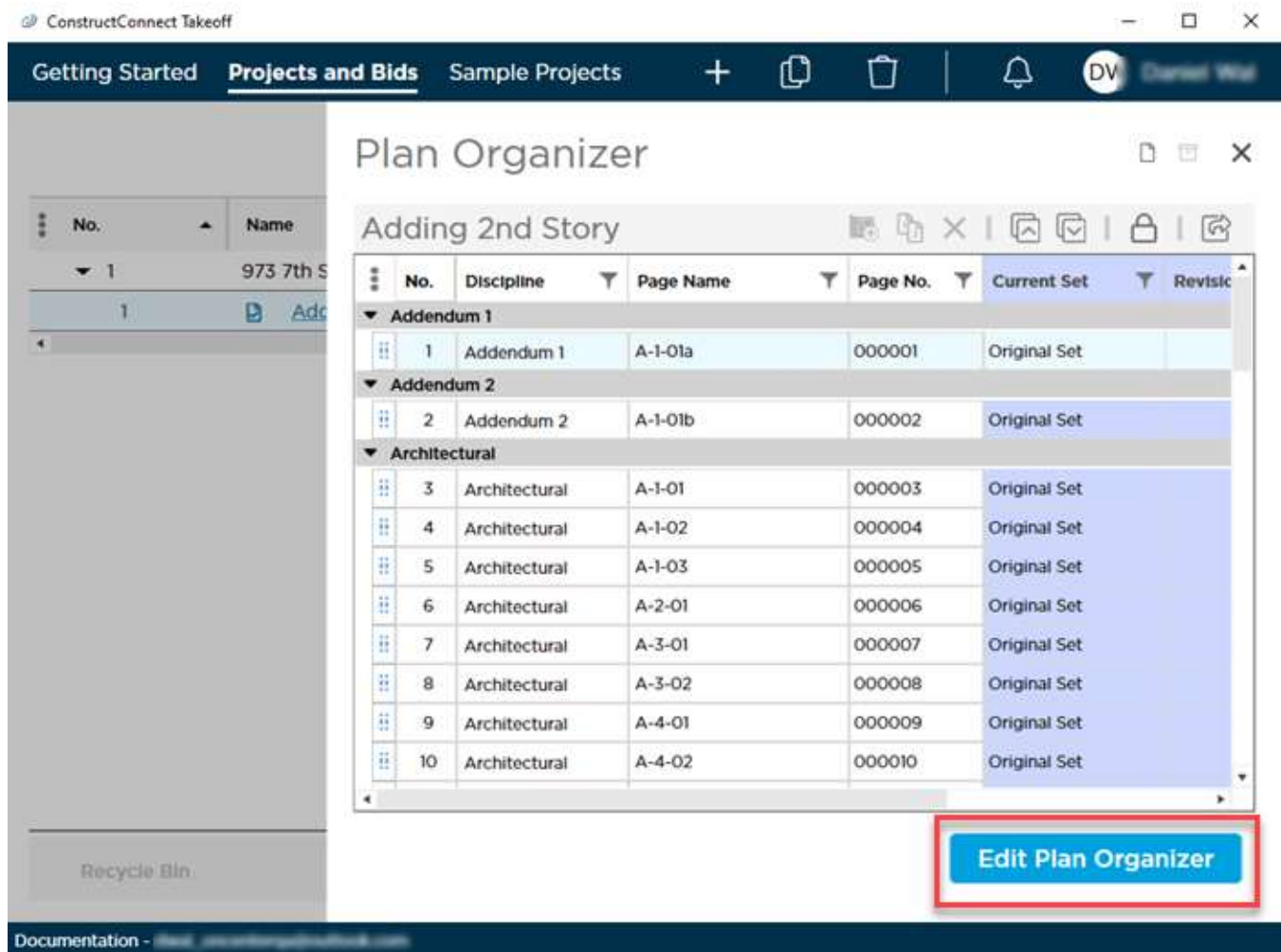
### Remove resizing and reorientating Revision Sets from the Cloud

Based on feedback from customers, the Cloud image handler will no longer attempt to resize/reorientate Revisions sets to match the base image when a Revision Set is added to a project. Resizing, reorientating, deskewing, and aligning Revisions functions are available to the end user, on the Takeoff Tab, via the Overlay controls. This change puts users in control of resizing and reorientating. Users will be prompted to resize/align Overlays when a Revision is added to a Page.



## New Workflow for Editing the Plan Organizer

Prior to this release, when you opened the Plan Organizer, it was in EDIT MODE automatically. To improve multi-user experience (avoiding crashes caused by more than one person editing/updating a Project's Plan Sets at the same time), we added an "Edit Plan Organizer" button (bottom-right).



No.	Discipline	Page Name	Page No.	Current Set	Revision
<b>Addendum 1</b>					
1	Addendum 1	A-1-01a	000001	Original Set	
<b>Addendum 2</b>					
2	Addendum 2	A-1-01b	000002	Original Set	
<b>Architectural</b>					
3	Architectural	A-1-01	000003	Original Set	
4	Architectural	A-1-02	000004	Original Set	
5	Architectural	A-1-03	000005	Original Set	
6	Architectural	A-2-01	000006	Original Set	
7	Architectural	A-3-01	000007	Original Set	
8	Architectural	A-3-02	000008	Original Set	
9	Architectural	A-4-01	000009	Original Set	
10	Architectural	A-4-02	000010	Original Set	

You must click this button to add, edit, or delete Plan Sets or make any other changes to the Plan Organizer.

This changes the "new project" workflow a bit also. Previously, when you added a new Project, you were led to the Plan Set Editor (with the Plan Organizer behind it) immediately. With this change, you will arrive at the Plan Organizer, where you will unlock it (click Edit Plan Organizer) and then add your Initial Plan Set to the project.

## Updated Delete Confirmations within Plan Set Editor and Plan Organizer

Per customer request, we've updated the messages shown when users are planning to delete pages and/or plan sets from a project. These changes were made so that users don't unknowingly delete pages or plan sets they didn't intend to.

When you've selected pages for deletion (and clicked on one of the Delete options) in either the Plan Set Editor or the Plan Organizer, you will see this message:

Delete Pages?

×

Deleting pages will remove all associated takeoff items, annotations, and/or file attachments permanently from all bids within the project for all users. **This action cannot be undone.**

Are you sure you want to delete the selected page(s)?

No, Keep Pages

Yes, Delete Pages

When you click the red "Yes, Delete Pages" button, you will see this message. If you click Delete here, the pages will be deleted permanently.

Confirm Delete

×

!

**This action cannot be undone.**  
Are you sure you want to proceed?

Cancel

Delete

If you are deleting one or more entire plan sets from the Plan Organizer, a similar series of messages will be displayed.

When you select a plan set to delete (and click Delete), you will see this message:

Delete Plan Set?

×

Deleting plan sets will remove all pages, associated takeoff items, annotations, and/or file attachments permanently from all bids within the project for all users. **This action cannot be undone.**

Are you sure you want to delete the plan set(s)?

No, Keep Plan Set

Yes, Delete Plan Set

When you click the red "Yes, Delete Plan Set" button, you will see this message. If you click "Delete" here, the plan set(s) will be deleted permanently.

Confirm Delete

×

!

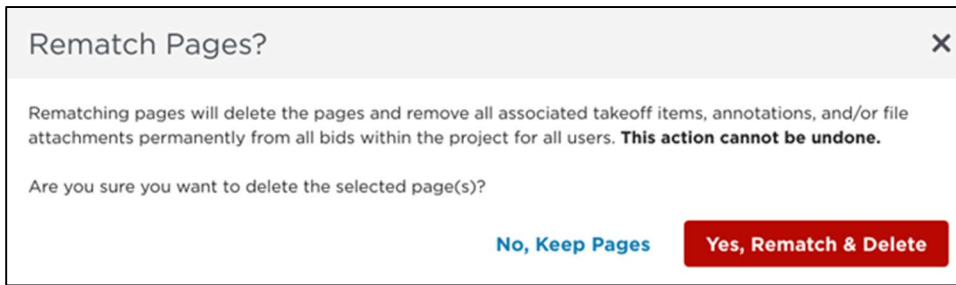
**This action cannot be undone.**  
Are you sure you want to proceed?

Cancel

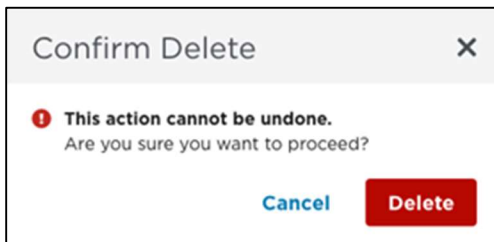
Delete

Likewise, you will see a similar series of messages in the Plan Set Editor if you match a revision page to its original after you have performed takeoff on the revision.

The first message will look like this:



When you click the "Yes, Rematch & Delete" button, you will see this message. If you click Delete, your pages will be deleted permanently.

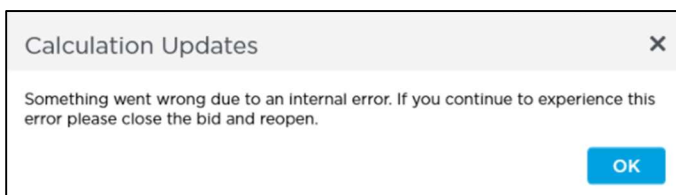


As a reminder, revisions should always be matched to originals prior to performing any takeoff on the revisions to avoid the possibility of deleting pages that you don't want to.

## App Remains Open When Performing Calculations

As part of our efforts to fortify the stability of ConstructConnect Takeoff, if the application fails to update the calculations for a page, it will keep running and revisit that page after completing its batch of calculation tasks, rather than automatically closing.

It will make three more attempts to update the calculations. If none of those attempts is successful, you will see the following message:



Please close the bid and reopen it to resolve the issue.

## Updated Tooltips to Improve User Experience

Continuing our efforts to bring increased stability to ConstructConnect Takeoff, the last several releases have included changes that limit a user's ability to edit some elements, such as takeoff items, bid areas, typical areas, and typical groups, while multiple users are working in the same bid.

To clarify what's happening in those instances, we have added new tooltips that explain what actions are being restricted and why. For example, you might see a tooltip that reads: "Takeoff Items/Bid Areas/Typical

Areas/Typical Groups cannot be edited at the moment. Plans are being edited in another instance or another user may be already editing Takeoff Items”.

## Fixes

We fixed a number of bugs in this version. The following are those likely to be encountered by an end user or originally reported by an end user:

- **TD-22257** - To avoid causing a user to experience system (Windows) performance issues, we limit the number of concurrent upload threads to "2".
- **TD-22262** – Customer Escalation Case # 01806050 – Use lexicographic sorting when rows in the Summary are grouped by Area.
- **TD-22260** - "Collapse all columns" icon does not work in Summary tab
- **TD-22011** - Deleting a Takeoff Item after using the Next/Previous arrow in the Takeoff Item Properties window crashes the application.
- **TD-21839** - Moving Summary Tab window when the Calculation modal is displayed freezes application.
- **TD-21819** - Discarding changes after editing a Takeoff Items causes the "Unsaved Changes" message to continue to display the next time the Takeoff Item is opened, then closed (without making any changes).
- **TD-21675** - Recalculating issue after the program closes before calculations were complete.
- **TD-21521** – Multi-user crash when one user deletes a Typical Group Item while another user is editing it.
- **TD-20091** - The Assign (to Selected Area) button is greyed-out in an additional, detached Takeoff window.
- **TD-20075** - Takeoff Item Groups are not sorting in the Takeoff Item Window correctly when Takeoff Item Window Columns is grouped by Groups because duplicate Groups are created when adding Takeoff Items.
- **TD-20056** - Deleting a Typical Group item when TG frame has takeoff in it changes current Page selection to page where the TG frame exists.
- **TD-20055** - Users can delete the default (system) Takeoff Item Results.
- **TD-19504** - Pressing <Ctrl> + <Tab> causes the program to freeze up.
- **OCC-3625** - Reopening a bid after deactivating the last set in a bid with a revision doesn't remove Punch Items that were on that page
- **OCC-3622** - Drawing a Typical Group Frame after reactivating a plan set with Typical groups, in a project with more than one bid, caused the application to shut down unexpectedly

Based on analysis of program logs, we addressed the following:

- Added program locks when user creates/edits Typical Groups to prevent multiple users from editing items for the same project simultaneously to avoid crashes
- Added user messaging when an invalid calculation is about to occur and prevent it from happening
- Prevent an unhandled exception (that caused several crashes in August) when users' DNS changes (the application now updates DNS information every two minutes as opposed to only doing it once while it the program is open)
- Fixed an issue (that caused some crashes in August) when the background recalculation engine fails to get all the pages whose totals need to be updated by adding a calculation message to let the user know to retry the action

- Fixed an error occurring when the application started, by delaying initialization of the calculation engine by one minute
- Fixed an error causing a crash when the application tries to get all the locks for a project and the user experienced internet connection issues

## Known Issues

- If users are unable to remove the Pending Uploads flag from the Projects and Bids List after following all the required steps outlined [here](#), please contact our Technical Support team to reset the flag.
- If a Sheet no longer belongs to the Current Set in a bid because the Revision Page was deleted and the Original Page was deactivated, the takeoff and annotations done on the Revision Page do not get removed from the bid as expected and the totals on the Worksheet and Summary Tabs are incorrect.
  - **Workaround:** Activate/deactivate the Original Set
  - **\* UPDATE:** Corrected for pages with takeoff. Work continues on pages with annotations as well.