



ConstructConnect Takeoff v. 21.5.0.0 Release Date: May 14, 2021

V.21.5.0.0 is a scheduled upgrade to ConstructConnect Takeoff that includes several new features and enhancements and a number of bug fixes.

Contents

Features	2
Image Legend	2
Adding the Legend to the Takeoff Tab (Bid-Level).....	2
Customizing the Legend	2
Moving the Legend	3
Adjusting the Legend’s Appearance	3
Adding the Legend to All Bids (Application-Level).....	5
Resetting Image Legend.....	5
Image Legend and Capture View	6
Changes.....	7
Editing the Plan Organizer	7
Fixes	7
Known Issues.....	8

Features

Image Legend

We've made a number of significant enhancements to the Image Legend within ConstructConnect Takeoff.

Adding the Legend to the Takeoff Tab (Bid-Level)

First, you can add a legend to each (or all) of the pages in your bid from the Takeoff Tab, rather than going into Print Preview to do so. We've added an icon on the main toolbar that allows you to display the legend and determine how you want it to look.

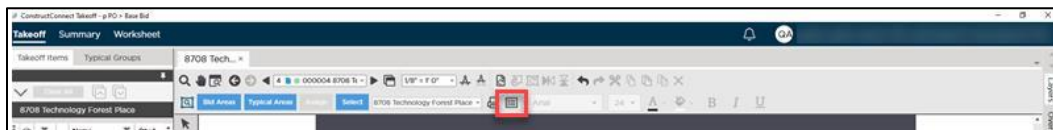


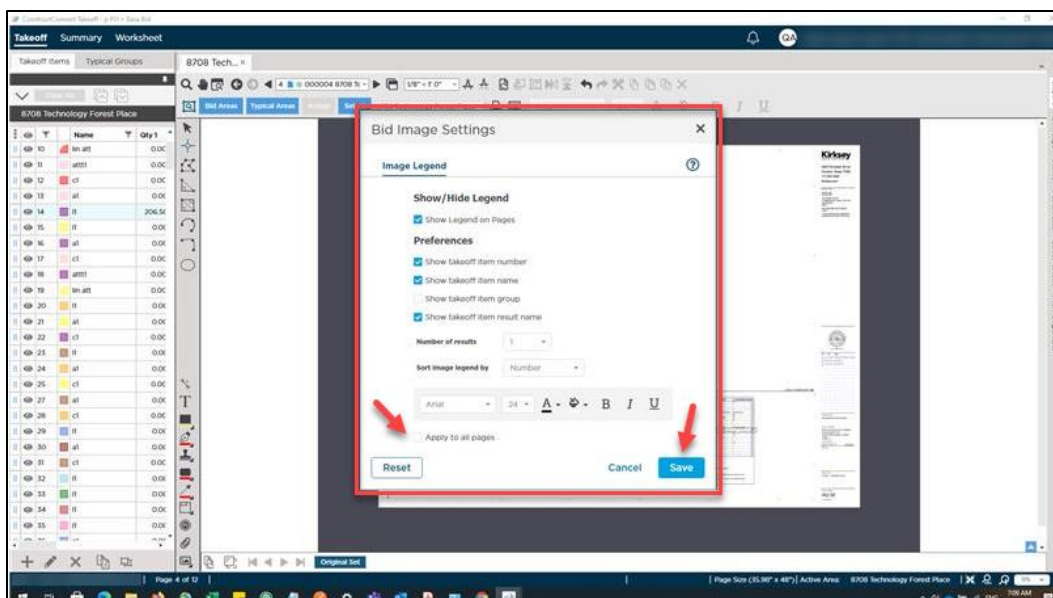
Image Legend icon

on main toolbar

Customizing the Legend

When you click the icon, you'll see a dialog box where you can

- Show/hide the Legend
- Choose what to include, such as Takeoff Item number, Item name, Item Group, and Item result name
- Select the number of results to show
- Decide how to sort. By Takeoff Item number, Item name, or Item Group
- Change the font, font size, text color, and/or background color
- Add bold, italics, or underline to the text



Bid Image Settings dialog

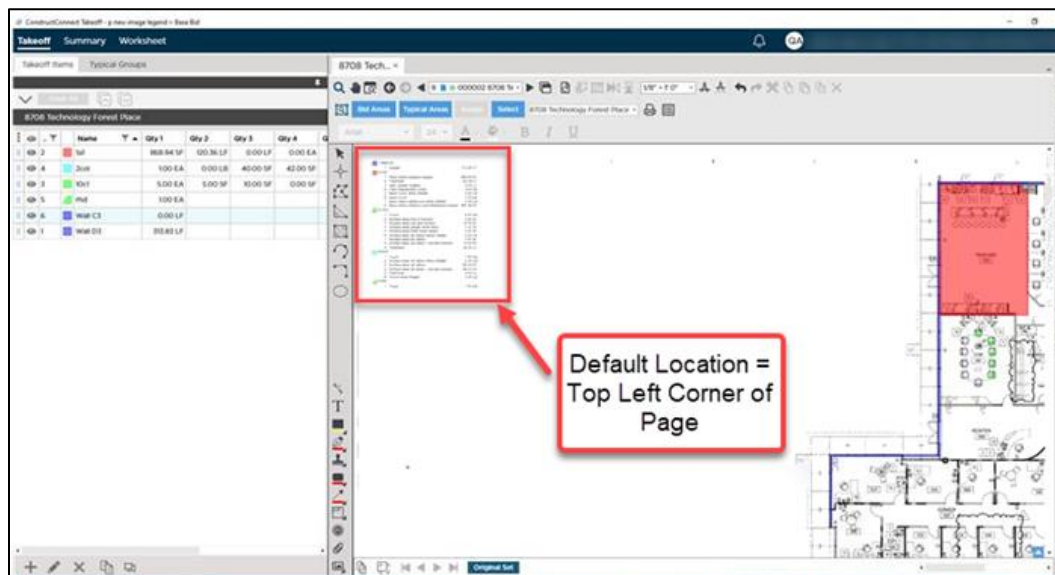
By default, Takeoff Item number, name, and first result are shown. Sorting is by Takeoff Item number. Text is Arial, 24-point font, and black in color. Background color is white. No bold, italics, or underline is applied.

You can check “Apply to all pages” if you want the legend to appear on all pages (and open takeoff windows) where you have takeoff done in a bid. Otherwise, it will be added only to the page (or takeoff window) that you’re on.

When you click Save, all your preferences will be applied and the legend will appear on the page.

Moving the Legend

By default, the legend will appear in the top left corner of the page (or takeoff window) to which it’s been added. To move it, select the legend and drag and drop it anywhere else on the page.



Default Image Legend position

If you move the legend and leave the page or close the bid, when you return to that page or reopen the bid, the legend will be in the same place.

You can move the legend anywhere on the image canvas or the gray border around it. However, to see the legend from Print Preview, it must be on the image canvas.

Adjusting the Legend’s Appearance

When the legend is displayed and selected on a page, the Image Legend toolbar will be enabled.

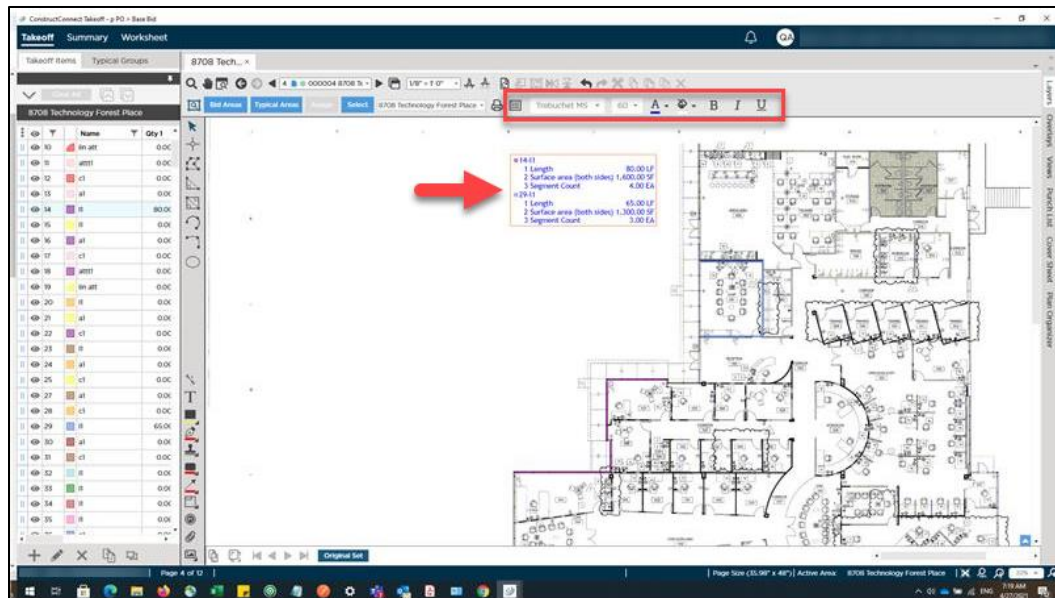


Image Legend toolbar (Enabled)

From that toolbar, you can change/update any of your preferences related to font, font size, text color, background color, or application of bold, italics, or underline. Changes take effect immediately and the Bid Image Settings dialog is updated to match.

Changes made from this toolbar will apply only to the current page (or takeoff window) if “Apply to all pages” is unchecked.

If the Image Legend is displayed but not selected, this toolbar will be disabled. To enable it, simply select the legend.

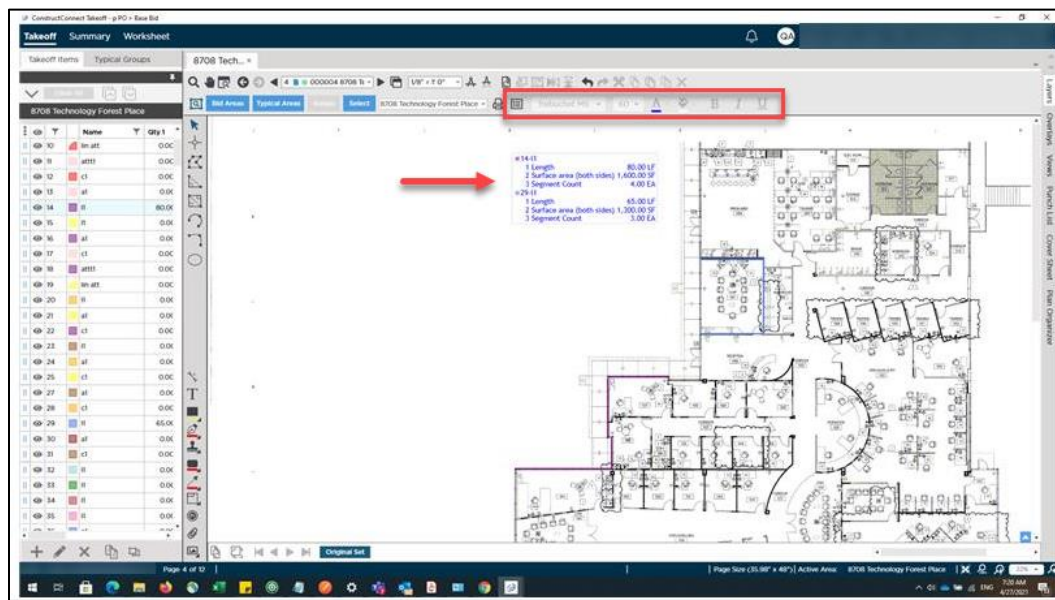
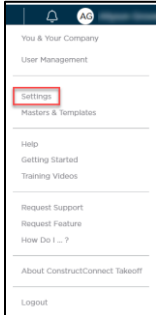


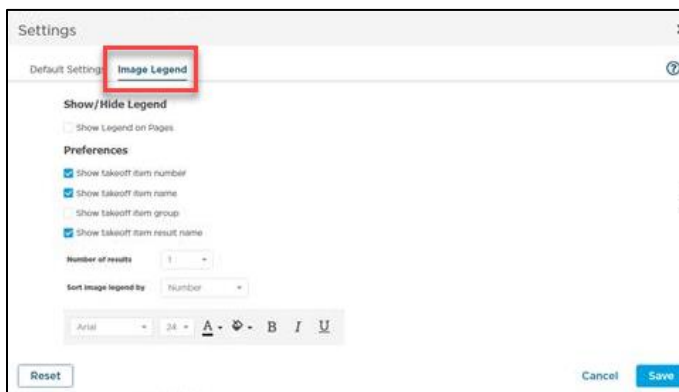
Image Legend toolbar (Disabled)

Adding the Legend to All Bids (Application-Level)

You can also set or update your preferences for the Image Legend at the application level. To do so, click Settings from within the profile menu (top right corner).



The main Settings window now has a second tab for Image Legend.



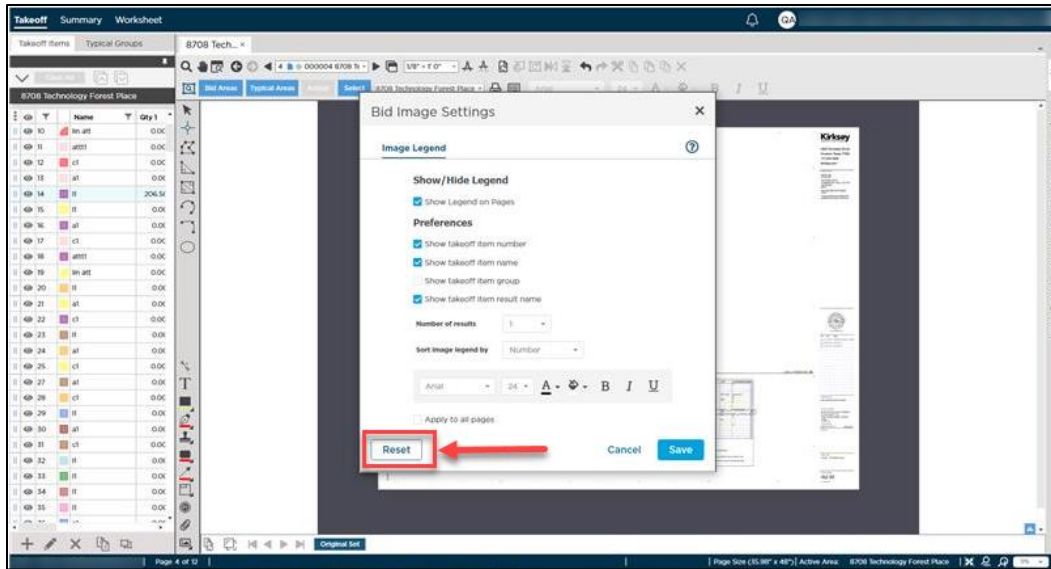
New Image Legend tab in Settings

The preferences shown here are the same as what's at the bid level. But, it's important to note that changes made here will apply to all new bids going forward. They will not apply to any existing (or past) bids.

Resetting Image Legend

From within a bid, if you move the legend and/or adjust the preferences and then want to return it to the default position/appearance, click the Reset button in the Bid Image Settings dialog.

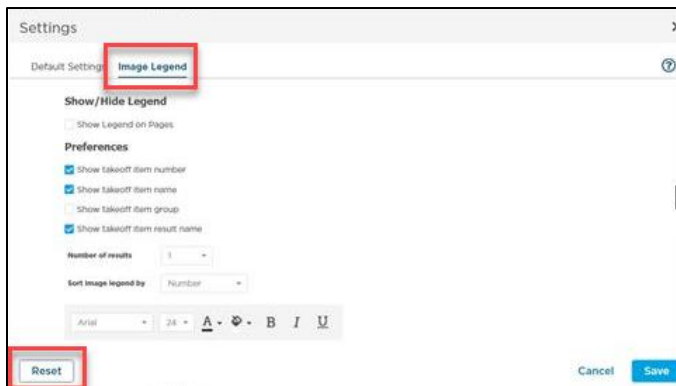
This will reposition the legend to the top left corner of the page (default location) and revert its appearance to what's saved in Settings at the application level.



Reset button for

Image Legend at Bid Level

You can also reset the legend from the application's main Settings window. Click the profile menu, go to Settings and select the Image Legend tab.



Reset button for Image Legend at Application Level

Clicking Reset from the main Settings window will revert the legend to the original program defaults, which were listed previously.

Image Legend and Capture View

If the Image Legend is displayed on a page and you use the Capture View tool to copy your page to a clipboard, print your page to a PDF, or save it as a .jpg, the Image Legend will display in the pasted copy, the PDF, and the .jpg as well.

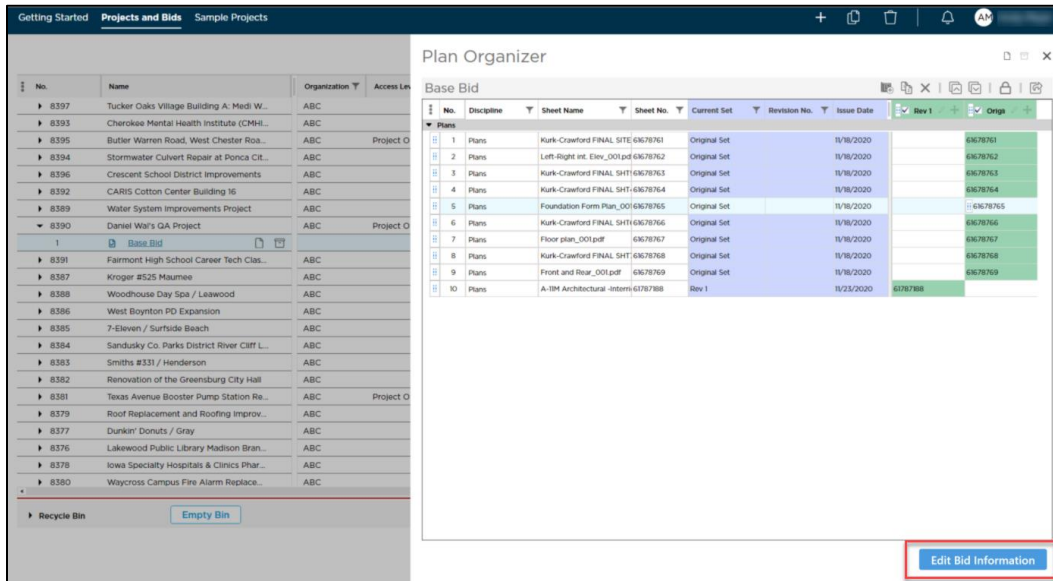


Likewise, if you add the legend to your page and go to Print Preview, the legend will be included when you make a hard copy or save to PDF.

Changes

Editing the Plan Organizer

We are adding an “Edit Bid Information” button to the Plan Organizer to streamline the experience of making changes to plans and to maintain a consistent look and feel across similar elements of the application, such as the Cover Sheet.



No.	Discipline	Sheet Name	Sheet No.	Current Set	Revision No.	Issue Date	Rev 1	Orig
1	Plans	Kirk-Crawford FINAL SITE 6/6/2020		Original Set		1/7/2020		6/6/2020
2	Plans	Left-Right Int. Elev_001.pdf 6/6/2020		Original Set		1/7/2020		6/6/2020
3	Plans	Kirk-Crawford FINAL SHT1 6/6/2020		Original Set		1/7/2020		6/6/2020
4	Plans	Kirk-Crawford FINAL SHT1 6/6/2020		Original Set		1/7/2020		6/6/2020
6	Plans	Foundation Form Plan_001 6/6/2020		Original Set		1/7/2020		6/6/2020
6	Plans	Kirk-Crawford FINAL SHT1 6/6/2020		Original Set		1/7/2020		6/6/2020
7	Plans	Floor plan_001.pdf 6/6/2020		Original Set		1/7/2020		6/6/2020
8	Plans	Kirk-Crawford FINAL SHT1 6/6/2020		Original Set		1/7/2020		6/6/2020
9	Plans	Front and Rear_001.pdf 6/6/2020		Original Set		1/7/2020		6/6/2020
10	Plans	A-104 Architectural - interim 6/7/2020		Rev 1		11/23/2020	6/7/2020	

Click this button and then use the icons in the top right corner to add/duplicate/delete plans, rearrange the order of your plans, lock the Plan Organizer’s columns, or export your list of plans to Excel.

This new button will be visible when accessing the Plan Organizer from the Projects and Bids List or from the Takeoff Tab within a bid.

Fixes

We fixed a number of bugs in this version. The following are those likely to be encountered by an end user or originally reported by an end user:

- TD-19957. If a user rotated a page in a bid and another user opened that bid, the second user didn’t see the change (rotation) that was made.
- TD-20089. Changing the scale for all pages in a bid didn’t recalculate the results on all pages correctly on Summary and Worksheet tabs.
- OCC-3312. Restoring a bid with takeoff deactivated all plan sets and showed incorrect totals on the Summary and Worksheet tabs. (When restoring a bid, must reactivate plan sets to push correct results to Summary and Worksheet.)

Known Issues

- Clicking the Print icon when Image Legend is on doesn't open Print Preview full screen and Print and Cancel buttons aren't visible until window is resized.
 - **Workarounds:**
 - Press Alt + Space and then click "Maximize" in the dialog that opens to reset the Print Preview.
 - In Print Preview, select your print options on the left and press Enter (on keyboard) to print the page.
- If a Sheet no longer belongs to the Current Set in a bid because the Revision Page was deleted and the Original Page was deactivated, the takeoff and annotations done on the Revision Page do not get removed from the bid as expected and the totals on the Worksheet and Summary Tabs are incorrect.
 - **Workaround:** Activate/deactivate the Original Set
 - *** UPDATE:** Corrected for pages with takeoff. Work continues on pages with annotations as well.
- Bids originating from the ConstructConnect Platform cannot be imported into Quick Bid when the Bid Date, Bid Time, Start Date, and End Date are missing from the Bid Cover Sheet.
 - **Workaround:** Enter Bid Date/Time, Start/End Date on the Bid Cover Sheet in ConstructConnect Takeoff. Remember to press Tab or Enter after adding dates/times to activate Save button for Bid Cover Sheet.

Bid Cover Sheet □ □ ×

Project Information		Bid Settings and Information	
Project Name		Bid Name	Base Bid
Project Code	Project Type Default	Lead Estimator	Bid Status Bidding
Organization	Current Bid	Bid Code	Contract/Job No.
Project Owner(s)		Accounting ID	Total SQ Size
Notes	Bid Date/Time and Start/End Date must be populated to export Bid to Quick Bid	Bid Date and Time Jan 19, 2021 @ 2:00 PM CST	Local Bid Date and Time Jan, 19 2021 @ 02:00 PM
		Start Date Feb 14, 2021	End Date Feb 22, 2021