



# ConstructConnect Takeoff v. 21.1.0.0

Release Date: January 15, 2021

V.21.1.0.0 is a scheduled upgrade to ConstructConnect Takeoff that includes several enhancements and a significant number of bug fixes.

## Contents

Changes.....	2
Optimized Canvas Space .....	2
Enhanced Printing Preferences.....	2
Fixes .....	3
Known Issues.....	4

## Changes

### Optimized Canvas Space

We have made changes to the layout of the Takeoff Tab in order to provide you with more canvas space to see your images and to perform your takeoff.

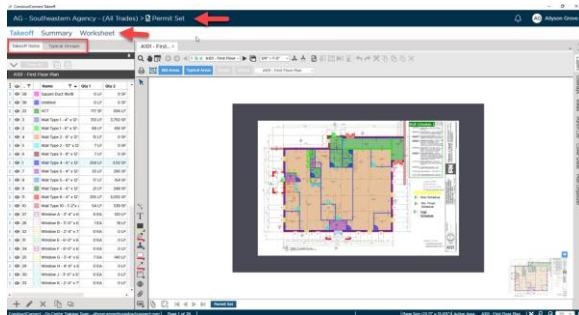
Please see the following screenshots. The first one shows the previous view. The second shows the changes we've made to optimize your space in this critical part of the program.

Specifically, we have changed the following:

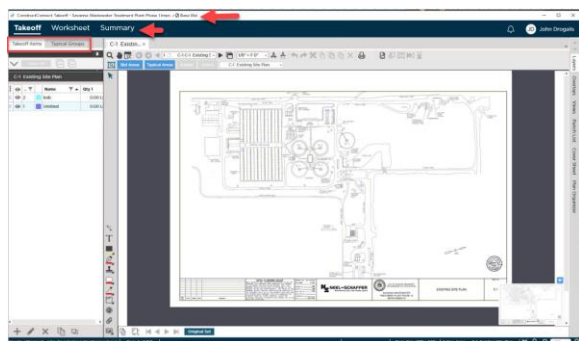
- Removed the current white header at the top of the screen
- Moved the Project and Bid name to the (new) white header at the top of the screen
- Moved the Takeoff, Summary, and Worksheet Tabs into the existing blue header from their current position

In addition, whatever tab you have selected will now be emphasized in bold with an underline.

#### *Previous Layout*



#### *New Layout*



### Enhanced Printing Preferences

We have enhanced your experience of printing takeoff to a physical printer or to a PDF by making a few key changes. The following will now persist from one project to another in the program:

- Preferred printer (last printer selected)
- Orientation (landscape vs. portrait)
- Paper size



## Fixes

We fixed a large number of bugs in this version. The following are those likely to be encountered by an end user or originally reported by an end user:

- TD-18959. Duplicating multiple sheets in Plan Organizer caused a crash.
- TD-19062. Project Cover Sheet was opening instead of the Bid Cover Sheet after searching/filtering the Projects and Bids List.
- TD-19325. Rearranging the order of plan sets in the Plan Organizer caused a crash.
- TD-19335. Deleting a sheet with takeoff objects (including a Typical Group) assigned to a Bid Area and a Typical Area caused a crash.
- TD-15213. When hovering over or selecting a Bid Area from the dropdown, the color of the text was too clear and difficult to read.
- TD-15487. Sheet icon in the Plan Organizer and the Plan Set Editor was too clear and difficult to read.
- TD-17238. Incorrect name shown on one column header in Select Takeoff Item Template dialog box.
- TD-17341. Unlicensed user was able to edit the scale.
- TD-17394. New colors were not being automatically assigned to new Takeoff Item Templates.
- TD-17574. Manage Project Access button was not disabled for Projects from other Organizations.
- TD-18078. Punch Item Pane was not displayed when Punch Item dialog box is active.
- TD-18421. Pressing Enter in the Notes box in the Takeoff Item Properties window did not take user to the next line to continue typing.
- TD-18617. Tooltip did not display when users try to change their own access level to a project within the Manage Project Access dialog box.
- TD-19034. Special characters (such as "&" and "#") did not display in names of published Sample Projects.
- TD-17494. Terminology was incorrect in dialog boxes for duplicating Takeoff Item Templates with 255+ characters and when deleting Manual Results from the Worksheet Tab.
- TD-17549. Tooltip displayed when deleting manually created Layers in Masters.
- TD-17575. Manage Project Access button was not grayed out for Projects the user does not have permission to modify.
- TD-17576. On the Worksheet tab, the Edit Manual Result button is now grayed out when a non-manual result is selected.
- TD-17631. Red box shows on the Takeoff Item Weight field where negative value was entered after the user cancels creation of that Item and begins creating another one.
- TD-17757. Scrolling on the Sample Projects tab was not possible when program window was resized to minimal size.
- TD-18577. The last location of the Rename Page dialog (on the Takeoff Tab) did not persist.
- TD-19334. Bid Cover Sheet Bid Date and Bid Time fields had incorrect labels.
- TD-18045. The context menu for undocked panes on the Takeoff Tab is enabled for unlicensed users.



- TD-19372. Pressing Enter in the Notes box in the Typical Groups Properties window takes user to next line to continue typing.
- TD-18557. The link to display all Project Owners for a Project is correctly displayed in the Project Cover Sheet.
- TD-14367. The Typical Group banner disappears after the frame for that Typical Group is added.
- TD-14368. The Typical Group banner disappears when the user selects a new Takeoff Item (and reappears only when a Typical Group with no frame is selected).
- TD-19030. Deleting a project and then duplicating a very large project caused a crash.
- TD-18269. Clicking Unlock button on Worksheet tab does unlock the columns (horizontal scrolling).
- TD-18607. Clicking the Default View button on the Worksheet Tab properly displays the Default View.
- TD-18605. The last location of the Rename Page and Set Scale dialog boxes did not persist.
- TD-19098. CC Takeoff did not check for any images that need to be uploaded when a project is opened, regardless of the status of the Pending Uploads icon.
- TD-18556. The banner on the Takeoff and Worksheet tabs to indicate user does not have a license did not display in the correct location.
- TD-19041. Delete and Duplicate did not work properly after user switches from Worksheet tab to Takeoff tab and then back to Worksheet tab.

## Known Issues

- If a Sheet no longer belongs to the Current Set in a bid because the Revision Page was deleted and the Original Page was deactivated, the takeoff and annotations done on the Revision Page do not get removed from the bid as expected and the totals on the Worksheet and Summary Tabs are incorrect.
  - **Workaround:** Activate/deactivate the Original Set
- Bids originating from the ConstructConnect Platform cannot be imported into Quick Bid when the Bid Date, Bid Time, Start Date, and End Date are missing from the Bid Cover Sheet.
  - **Workaround:** Enter Bid Date/Time, Start/End Date on the Bid Cover Sheet in ConstructConnect Takeoff. Remember to press Tab or Enter after adding dates/times to activate Save button for Bid Cover Sheet.

The screenshot shows the 'Bid Cover Sheet' form with two main sections: 'Project Information' and 'Bid Settings and Information'. The 'Project Information' section includes fields for Project Name, Project Code, Project Type (Default), Organization, Current Bid, and Project Owner(s). The 'Bid Settings and Information' section includes fields for Bid Name (Base Bid), Lead Estimator, Bid Code, Bid Status (Bidding), Contract/Job No., Accounting ID, and Total SQ Size. At the bottom, there is a 'Notes' section. Red boxes highlight the following fields: 'Bid Date/Time and Start/End Date must be populated to export Bid to Quick Bid' (a note), 'Bid Date and Time Jan 19, 2021 @ 2:00 PM CST', 'Start Date Feb 14, 2021', and 'End Date Feb 22, 2021'. The 'Local Bid Date and Time' is also shown as 'Jan, 19 2021 @ 02:00 PM'.